



805-036



General Information

| | |
|-------------------------|--|
| Order Code | 805-036 |
| Product Description | CYFELCO B T5 1X35 |
| Application | Offices, shops, educational and public centres, etc. |
| Installation | Ceiling Surface Mounted Luminaire |
| Luminaire type | Slim Line Batten for T5 Lamps |
| Light Source | T5 Fluorescent Tube |
| Number of light sources | 1 pc (not included) |
| Gear | Vossloh-Schwabe Electronic Ballast (HF) |
| Dimming | Not Dimmable |
| Standards | 2014/30/EU Electromagnetic Compatibility Directive 2014/35/EU Low Voltage Directive |
| CE mark | Yes |
| Warranty | X years |

Electrical Data

| | |
|------------------|-----------|
| Lamp Power | 35 W |
| Input voltage | 220-240 V |
| Input Frequency | 50-60 Hz |
| Protection class | Class I |

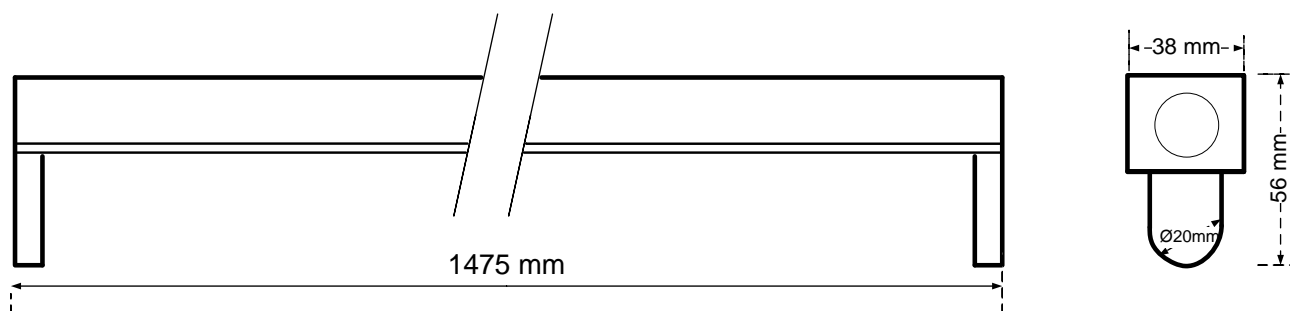
Mechanical Characteristics

| | |
|-----------------------------------|---------------------------------|
| Housing Material | Sheet steel 0,5mm |
| Surface Finish | White powder coating (RAL 9003) |
| Ingress protection code | IP 20 [Finger-protected] |
| Mechanical impact protection code | IK03 |
| Dimensions LxWxH | 1475x38x56mm |

Logistics

| | |
|--------------|---------------------------|
| Packing | 1 pc per resistant carton |
| Net weight | xx kg |
| Gross weight | xx kg |
| Volume | Xx m ³ |

Dimensional Drawing



ELMASCO INDUSTRIES S.A.

Head Office : 44 K. Palama, 14343 N. Chalkidona, Athens, Greece

Production Plant : Ag. Adrianos, 21100 Nafplio, Greece

Email: elmasco@elmasco.eu

Tel : +30 210 2583100

Fax: +30 210 2583107

